

**Unit 4 – Discovering Franklin Towne (p 55 - 68)**

**Self-test**

NAME .....

1. Citez les matières suivantes. 16 pts



1



2



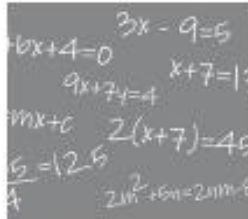
3



4



5



6



7



8



FRANÇAIS

9



ANGLAIS

10



ESPAGNOL

11



ITALIEN

12



13



14



15



16

2. Comment diriez-vous que vous êtes en 2nd Bac Pro dans un lycée professionnel ? 2 pts

.....

3. Comment demanderiez-vous à votre ami(e) les matières qu'il / elle a le mardi après-midi ?  
1 pt

.....

**4.** Comment diriez-vous à votre ami(e) que vous avez les matières suivantes aux horaires ci-dessous ? **3 pts**

– Cuisine de 10 h 05 à 11 heures

.....

– PSE de 13 h 30 à 14 h 25

.....

– Maintenance de 14 h 25 à 15 h 20

.....

**5.** Comment diriez-vous à votre ami(e) que vous avez besoin des objets suivants ? **4 pts**  
Faites des phrases complètes.

a. Une calculatrice et une règle pour votre cours de maths.

.....

b. Un dictionnaire pour votre classe d'anglais.

.....

c. Un crayon et une gomme pour votre classe d'arts appliqués.

.....

d. Une clé USB et des feuilles de papier pour votre cours de droit /éco.

.....

**6.** Comment diriez-vous à votre ami(e) que vous aimez sa nouvelle trousse et son nouveau sac à dos ? **1 pt**

.....

**7.** Comment diriez-vous que vous ne devez pas porter d'uniforme, mais que le règlement est très strict ? **1 pt**

.....

**8.** Comment diriez-vous qu'il est interdit de fumer dans les locaux de l'établissement? **1 pt**

.....

**9.** Comment diriez-vous que vous allez passer votre diplôme dans deux ans? **1 pt**

.....

	<b>A1</b> De 1 à 16 pts	<b>A2</b> De 17 à 24 pts	<b>B1</b> De 25 à 30 pts
Évaluation diagnostique			
Évaluation en fin d'unité			



**Activities - 1. Comprendre les caractéristiques d'un lycée (p 58)**

**PDF unit 4** ▶ Complete video sheet

Here is a video presenting *Franklin Towne Charter School*

**A. Anticipating before viewing.**

1. Where is Franklin Towne Charter High situated?  a. in Washington  
 b. in California  
 c. in Pennsylvania

2. Match each grade range with the appropriate school type:

- |                                      |                   |
|--------------------------------------|-------------------|
| 1. 1st grade to 5th grade            | a. Junior High    |
| 2. 6th grade to 8th grade            | b. College        |
| 3. 9th grade to 12th grade           | c. Primary school |
| 4. Undergraduate / graduate students | d. Senior High    |

3. Look at these pictures and say as much as you can about them. Make hypothesis.  
(people / room/ equipment etc.)



**B. Now watch the video and answer the questions your teacher will give you.**

**1. Watch the video until 4:15 and tick the activities that are done in Franklin Towne Charter High School.**

- tennis • working on computers • table tennis • long jump • high jump • cooking • swimming
- running • baseball • American football • art • pools • photography • hand ball • basketball
- video production • soccer • cheerleading • handicrafts

**2. Watch the video again from beginning to 1:15. Who says what?**



1.



2.



3.



4.



5.

among the best  
of the best

It's an award for  
excellence

The National blue Ribbon is  
an award that distinguishes  
different high schools, grade  
schools to be among the top  
of the top.

It's like  
winning  
the  
Superbowl

It's the World  
Series of  
education

**3. What are they talking about?**

.....  
.....

**4. Is it a federal or national recognition?**

.....

**5. Complete what he is saying with the key words you hear. from 1:16 to 1:40**



What we are doing here, we are trying to figure  
out the ..... to live life, we are trying to  
become ..... and the idea here, is that  
people can get ..... and that the path to get  
.....is through .....

**6. True or false. Tick the correct sentences. from 1:41 to 2:28**

- a. it has always been a big deal because not many schools get it.
- b. it's not a big deal, because many schools get this award.

- c. it's an opportunity for the best of the best, the exemplary schools to be recognized.
- d. it's an opportunity for the best of the best, the elementary schools to be recognized.
- e. it now points us as a loser among schools.
- f. it now points us as a leader among schools.
- g. it shows that your hard work is finally paying off for our grades.
- h. it shows that your hard work is finally paying off for something just beyond grades.
- i. less than 700 schools have earned this award the last 45 years.
- j. there's only been about 7000 schools that have won it the last 35 years.
- k. only 17 schools in Philadelphia have earned this award.
- l. only 70 schools in Philadelphia have won this award.

**7. What are the 3 adjectives the teacher uses to encourage his students? from 2:29 to 2:53** .....

**8. Why does Franklin Towne deserve this award?**

**a. Complete the sentences with the missing words. from 2:54 to 3:30**

*different • never satisfied • don't settle • amazing • improve • not a lazy school • 90%*

Franklin Towne deserves this award because we are ....., we are always looking to .....  
..... is not enough, we always have to strive (s'efforcer / faire son possible) to get that 100%  
We are hungry, we are always looking to improve.  
We are .....  
How can we close the gap?  
We .....  
What we were 5 years ago is nothing compared to what we are now.  
We are not afraid to be .....  
It truly is an ..... school  
This award has recognized a decade of hard work from teachers and students.

**b. Listen carefully to the teacher from 3:30 to 4:15.**



A. **Is he ?**  a. arrogant  b. persuasive  c. angry  d. convincing

**c. What words can you hear that justify your answers?**

.....  
.....

**Activities - 2. Comprendre des mots isolés (p 59)**

**PDF unit 4** ▶ Chart to complete

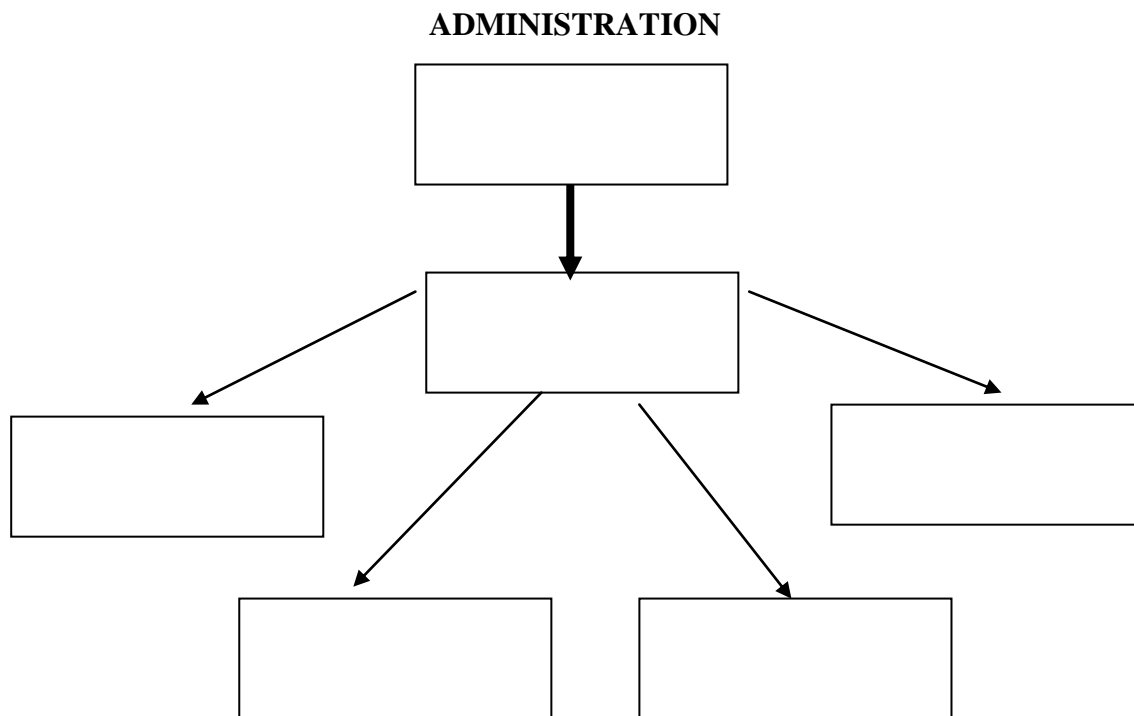
Ryan, gives you a book about his school. You take a look at it to get ideas to make a slideshow about your school.

	<b>SCHOOL on document page 59</b>	<b>YOUR SCHOOL</b>
<b>Name of school</b>		
<b>Sort/category of school</b>		
<b>Address</b>		
<b>Area code</b>		
<b>City</b>		
<b>State</b>		
<b>Country</b>		
<b>Telephone number</b>		
<b>Fax number</b>		
<b>e-mail address</b>		

Activities - 3. Compléter un organigramme (p 59)

PDF unit 4 ► Organization chart to complete

Build Franklin Towne school organization chart using the information below.





**Activities - 5. Comprendre des horaires et un emploi du temps  
(p 61)**

**PDF unit 4** ▶ Timetables

**1. Ryan explains you his schedule. Listen and note the bell schedule and the names of the subjects he has each day.**

Hours / Days	MONDAY	TUESDAY	WEDNESDAY	THURSDAY	FRIDAY
<b>1st period:</b> <b>From Monday to Thursday:</b> from ..... <b>On Friday: 7:50 to 8:30</b>	ENGLISH	ENGLISH	ENGLISH	ENGLISH	
<b>2nd period:</b> <b>From Monday to Thursday:</b> from ..... <b>On Friday from 8:35 to 9:15</b>		HISTORY	HISTORY		HISTORY
<b>3rd period / Study hall:</b> <b>From Monday to Thursday</b> from 9:40 to 10:25 <b>On Friday from 9:20 to 10:00</b>			FRENCH		
<b>4th period:</b> <b>From Monday to Thursday:</b> from ..... <b>On Friday from 10:05 to 10:45</b>		CATERING (elective)			
<b>5th period:</b> <b>From Monday to Thursday</b> from 11:25 to 12:15 <b>On Friday: 10:50 to 11:30</b>	LUNCH BREAK		LUNCH BREAK		LUNCH BREAK
<b>6th period:</b> <b>From Monday to Thursday</b> from 12:20 to 1:10 <b>On Friday from 11:35 to 12:15</b>		LUNCH BREAK		LUNCH BREAK	
<b>7th period:</b> <b>From Monday to Thursday:</b> from ..... <b>On Friday from 12:20 to 1:00</b>		GEOGRAPHY		GEOGRAPHY	
<b>8th period:</b> <b>From Monday to Thursday</b> from .....	EARTH SCIENCE				

**Tâche intermédiaire n°2 (p 61)**

**PDF unit 4** ▶ Timetables

Vous continuez votre diaporama. Notez votre emploi du temps et présentez oralement une journée de votre choix à vos camarades. Vous pouvez utiliser le support donné par votre professeur.

<b>Hours / Days</b>	<b>M.....</b>				
<b>First period</b>					
<b>From .....</b>					
<b>to .....</b>					

**Activities – 6. Comprendre un règlement (p 62)**

**PDF unit 4** ▶ Gap-fill text

**C. Read Franklin Towne rules concerning cell phones, beepers and other electronic devices and fill in the gaps with the following words. Then, get ideas for your project.**

*Be forbidden • must • allow • not be permitted • can*

**CELL PHONES AND OTHER ELECTRONIC DEVICES**

Cell phones are not permitted in an FTCHS classroom. If a parent needs to contact a child during class, he /she ..... call the front desk and we will get a message to his/her child. FTCHS will ..... students to bring cell phones and other paging devices to school **but**:

- Students ..... keep cell phones and other electronic devices in their lockers, turned off, at all times.
- Students ..... to bring cameras to school.
- Headsets or iPods ..... during school hours.

**D. 1. Read the following regulations and say what is allowed or forbidden.**

	Allowed	Forbidden
Smoking		
Cutting classes		
Chewing gum		
Eating and drinking in classrooms		
Eating on the field at lunch time		
Going to the bathroom in the middle of the period		
Going to the school store before and after class		

**2. Then, classify the different ways to express what is compulsory, forbidden or allowed.**

compulsory	forbidden	allowed

## Tâche finale d'expression orale en continu (p 67)

### Guidage

**Scénario:** Lors de votre séjour à Philadelphie, vous passez une journée au lycée de votre correspondant, Ryan. Il vous fait visiter les locaux et vous explique la vie dans un lycée Américain. Lors de la soirée d'adieux, vous présentez à votre tour votre propre lycée.

**Votre tâche:** par groupe de deux, commentez oralement aux Américains les diapositives d'un diaporama composé de photos de votre établissement scolaire.

Votre diaporama ne devra comporter que des photos, des titres, des tableaux ou des schémas, mais aucune phrase rédigée. Vous commenterez ensuite chaque diapositive à l'oral.

Vous pouvez vous entraîner à la tasse finale en vous aidant du sommaire ci-dessous. Pensez à utiliser les structures de phrases que vous avez vues tout au long de l'unité et à employer le vocabulaire noté en gras dans la *Word box* (P. 66). Vous devrez obligatoirement utiliser les modaux *must / mustn't / can / can't / be allowed* ou l'expression *be permitted*.

### Sommaire de votre présentation

<b>1. Présentation</b> <ul style="list-style-type: none"><li>• nom et type de lycée</li><li>• logo</li><li>• adresse, n° de téléphone...</li><li>• année scolaire</li></ul> 	<b>2. Plan</b> <ul style="list-style-type: none"><li>• emplacement du lycée</li><li>• plan intérieur du lycée</li></ul> 	<b>3. Administration</b> <ul style="list-style-type: none"><li>• organigramme du lycée</li><li>• nombre d'enseignants et d'élèves</li></ul> 
<b>4. Formation</b> <ul style="list-style-type: none"><li>• disciplines enseignées</li><li>• diplômes préparés</li><li>• emplois du temps</li></ul>  	<b>5. Activités extra-scolaires</b> <ul style="list-style-type: none"><li>• associations sportives et culturelles</li><li>• cours de soutien</li></ul>  	<b>6. Autres diapositives</b> <ul style="list-style-type: none"><li>• cantine</li><li>• règlement intérieur</li><li>• stages</li><li>• journal de l'école</li><li>• et d'autres idées !</li></ul>   